

- Hinton, H. E.** 1950. Aquatic Diptera collected in the River Dove near Dove-dale Derbyshire. Jour. Soc. Brit. Ent. 3:203-206.
- . 1953. Some adaptations of insects to environments that are alternately dry and flooded, with some notes on the habits of the Stratiomyidae. Trans. Soc. Brit. Ent. 11:209-227.
- . 1956. The spiracular gills of insects. Proc. 10th Inter. Cong. Ent. 1:543-548.
- Johannsen, O. A.** 1935. Aquatic Diptera. Part II. Orthorrhapha-Brachycera and Cyclorrhapha. Cornell Univ. Agr. Exp. Sta. Memoir 177.
- Needham, J. G. and C. Betten.** 1901. Aquatic insects in the Adirondacks. Bull. N. Y. St. Mus. 47:383-612.
- Smith, K. G. V.** 1969. The Empididae of southern Africa. Ann. Natal Mus. 19:1-342.
- Sommerman, K. M.** 1962. Notes on two species of *Oreogeton*, predaceous on black fly larvae (Diptera: Empididae and Simuliidae). Proc. Ent. Soc. Wash. 54:123-129.
- Trehan, P.** 1969. Description des stades préimaginaux et données sur la biologie de *Phyllodromia melanocephala* Fabricius, 1794 (Diptères-Empididae). Rev. Écol. Biol. Sol. 6:41-52.
- Vaillant, F.** 1952. Un Empidide destructeur de simulies. Bull. Soc. Zool. Fr. 76:371-379.
- . 1953. *Hemerodromia seguyi* nouvel empidide d'Algérie destructeur de simulies. Hydrobiologia 5:180-188.

---

**PLEOTRICHOPHORUS TETRADYMIÆ, A NEW SPECIES OF APHID  
FROM UTAH**  
(HOMOPTERA: APHIDIDÆ)<sup>1</sup>

CLYDE F. SMITH, *Department of Entomology, North Carolina State  
University, Raleigh, North Carolina 27607*

and

GEORGE F. KNOWLTON, *Department of Zoology, Utah State  
University, Logan, Utah 84321*

ABSTRACT—*Pleotrichophorus tetradymiæ*, n. sp. on *Tetradymia canescens* DC., is described from the Hansel Mountains (Box Elder County) in Northern Utah.

This new species was found while the junior author was on his terrestrial arthropod survey trips to Curlew Valley, part of a program of the Utah State University Ecology Center.

---

<sup>1</sup> Paper No. 3280 of the Journal Series of the North Carolina State University Agricultural Experiment Station, Raleigh, N. C.

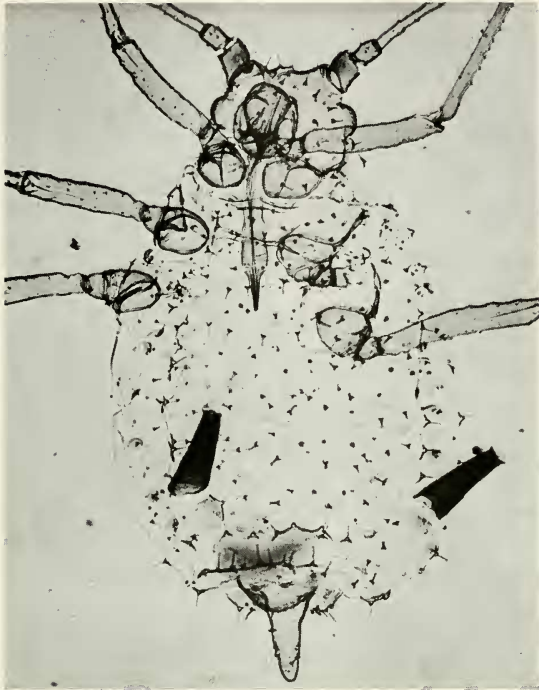


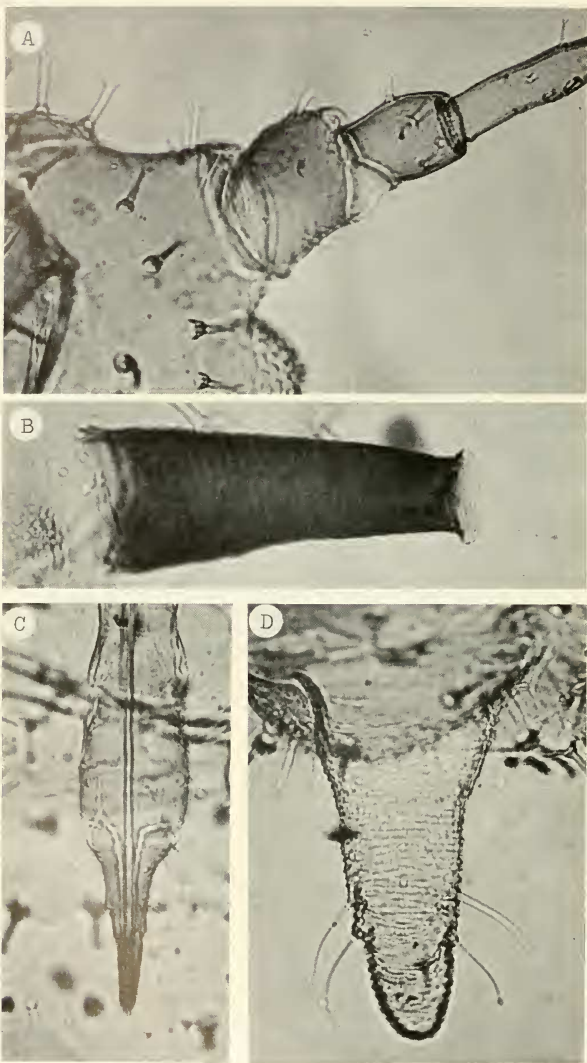
Fig. 1, *Pleotrichophorus tetradymiae*, n. sp., 60 $\times$ .

This species keys to *Pleotrichophorus glandulosus* (Kaltenbach) in the key by Hille Ris Lambers (1969:165). However, it differs from *glandulosus* in having dark siphunculi, in the shape of setae, and in having conspicuous setae on a.s. III.

***Pleotrichophorus tetradymiae*, n. sp.**

(Figs. 1, 2)

*Apterous viviparac.*—Color of living specimens black to blackish green. Cleared specimens pale on head; a.s. I dusky; II, pale. Joints between a.s. III and IV dusky; a.s. V and VI dark. Thorax pale. Legs pale. Siphunculi dark. Anal plate dark. Cauda pale. Setae conspicuous on head, antennae, legs and body. All setae similar in having a knobbed apex. A.s. III with 2–4 rhinaria. Cauda with 2 pairs lateral setae and 1 dorsal seta. T. ch. 3–3–3.



Measurements (10 specimens). Body 1.50<sup>2</sup> (1.50–2.12). Setae on vertex 0.04, a.s. III 0.02 or ca.  $\frac{2}{3}$  diameter of segment; dorsum of abdomen 0.05. A.s. III 0.39 (0.34–0.43); IV, 0.26 (0.26–0.35); V, 0.28 (0.25–0.33); VI, 0.11 (0.10–0.14) + 0.35 (0.30–0.39). R IV + V, 0.12 (0.12–0.14). Hind tibiae 0.85 (0.85–1.02). Hind tarsomere II, 0.10 (0.09–0.13). Siphunculi 0.26 (0.26–0.30). Cauda 0.25 (0.19–0.26).

Principal diagnostic characters. Conspicuous, knobbed setae on antennae and body; shape of R IV + V and dark siphunculi.

*Alate viviparae*.—(Cleared specimens). Head dusky. Antennae dark except very base of a.s. III. Thorax dusky. Legs dusky being dark on distal  $\frac{1}{5}$  of tibia and all of tarsus. Abdomen with some sclerites, sclerotic around the base of some setae. Postsiphuncular sclerites present. Siphunculi dark. Anal plate and cauda dusky. A.s. III with 12–17 rhinaria; IV, 4–7; V, 0. Cauda with 2 pairs lateral setae and 1 dorsal seta.

Setae distinctly knobbed on vertex and antennae. Longest setae on a.s. III ca.  $\frac{1}{2}$  diameter of a.s. III. Dorsal abdominal setae blunt to slightly knobbed.

Measurements (3 specimens). Body 1.84–1.90. Setae on vertex 0.03, a.s. III 0.02 or ca.  $\frac{1}{2}$  diameter of segment, dorsum of abdomen 0.03. Length of a.s. III, 0.39–0.51; IV, 0.33–0.36; V, 0.28–0.31; VI, 0.11–0.12 + 0.30–0.44. R IV + V, 0.11–0.12. Hind tibiae 0.93–1.05. Hind tarsomere II, 0.11. Siphunculi 0.24. Cauda 0.19–0.22.

Principal diagnostic characters. Same as aptera.

Holotype (an adult aptera) on a slide labelled K-69-1, holotype, *Plectrichophorus tetradymiae* on *Tetradymia canescens*, Hansel Mountains, Utah, July 8, 1969, G. F. Knowlton. There are three specimens, one adult aptera and two nymphs, on the slide. Deposited in the United States National Museum. Paratypes in the collections of the authors, the British Museum, Hille Ris Lambers, Bennekom, Netherlands and H. L. G. Stroyan, Harpenden, England.

Collections on *Tetradymia canescens*, Utah, Hansel Mountains, (Box Elder County), June 30; July 8, 1969. Johnson's Canyon July 11, 1969. Kelton July 8, 1969. G. F. Knowlton collector.

#### REFERENCES

- Hille Ris Lambers, D. 1969. A key to, notes on, and descriptions of American *Plectrichophorus* Börner (Homoptera: Aphididae.) Ent. Ber. 29:165–180; figs. 1–4.

<sup>2</sup> The first number or measurement is that of the holotype, numbers in parenthesis indicate range in specimens studied. All measurements are in millimeters.

←

Fig. 2, *Plectrichophorus tetradymiae*, n. sp., 300×: A, portion of head and antenna; B, siphunculus; C, tip of rostrum; D, cauda.